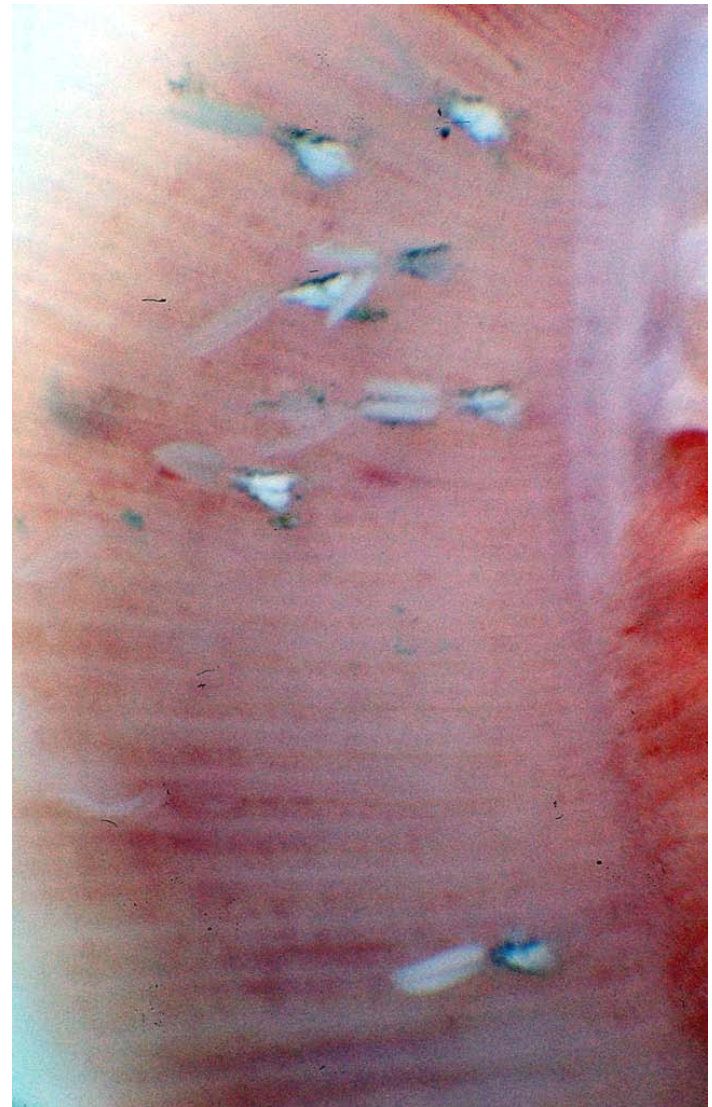


Ergasilus sp.; gills, freshwater fish.



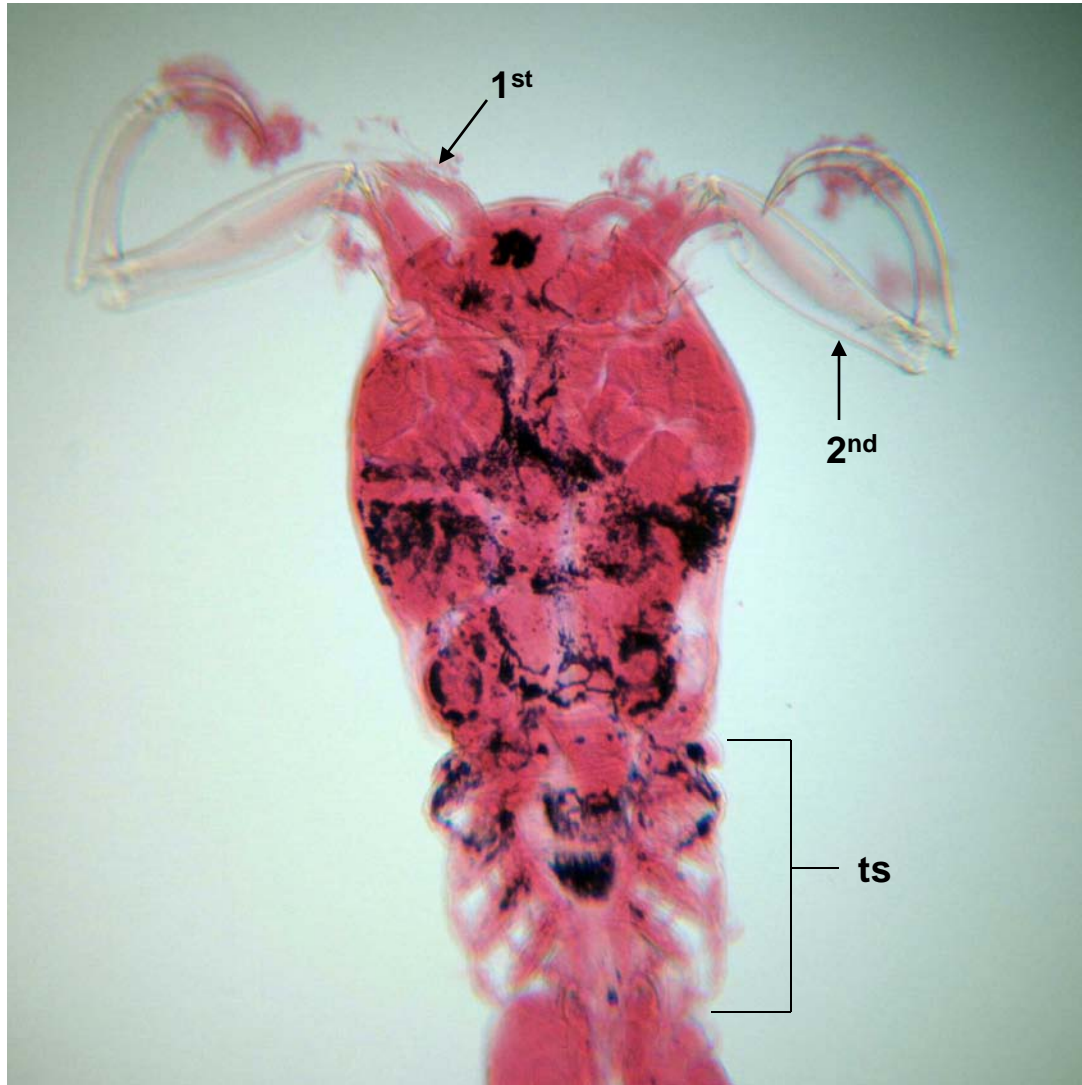
Ergasilus sp.; freshwater fish, dissected gills.



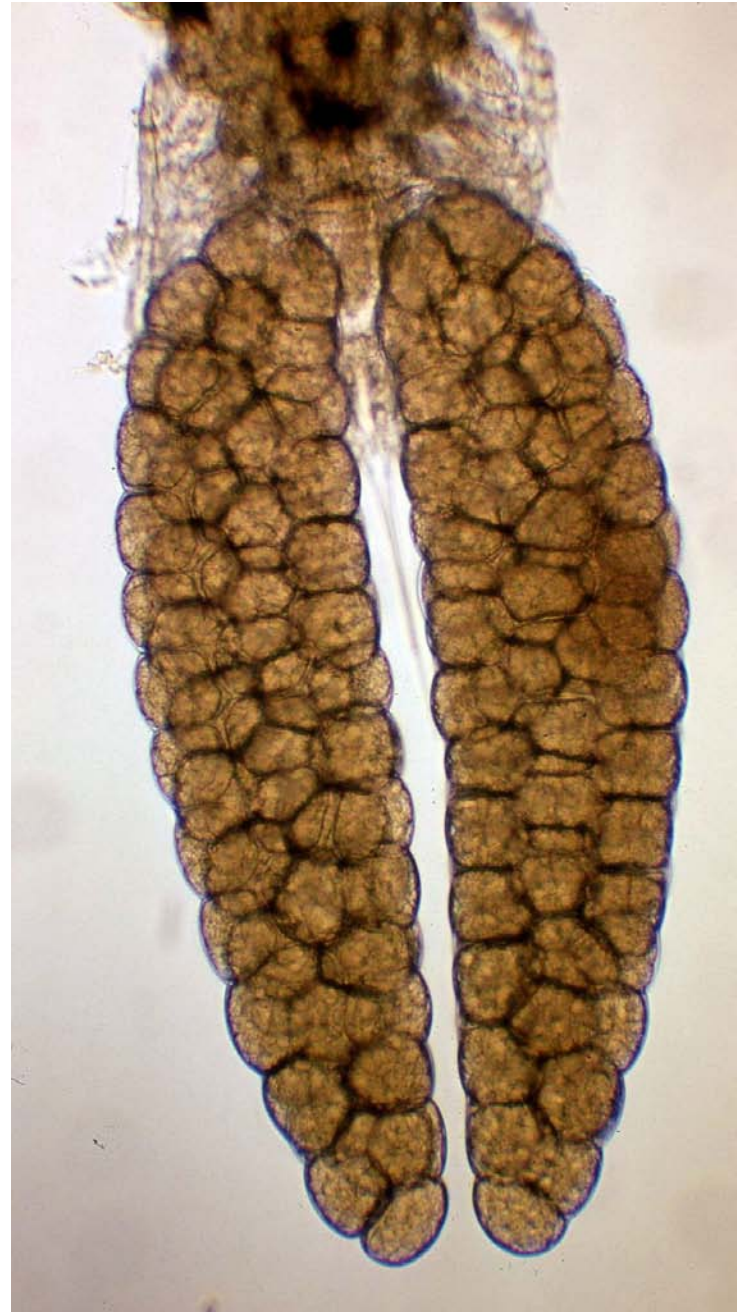
Ergasilus sp.; gills, freshwater fish.
Note gill lamellae. It is easy to see
here how effective the modified
“hook-like” antennae are, wrapped
around the gill filament and between
fringe-like lamellae.



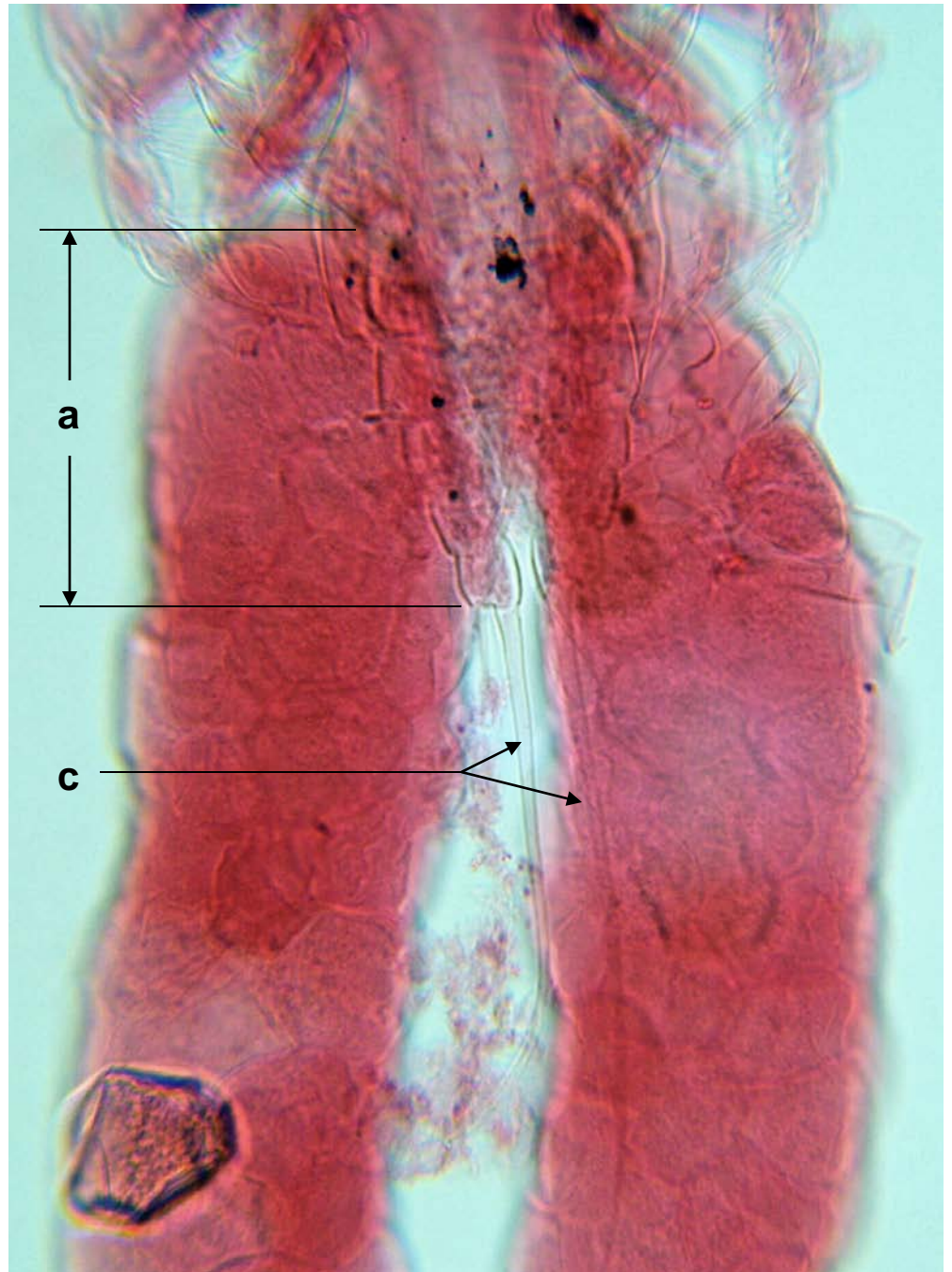
Ergasilus sp.: entire (Semichon's). Legend: 1st, first antenna; 2nd, second antenna, ts, thoracic segments.



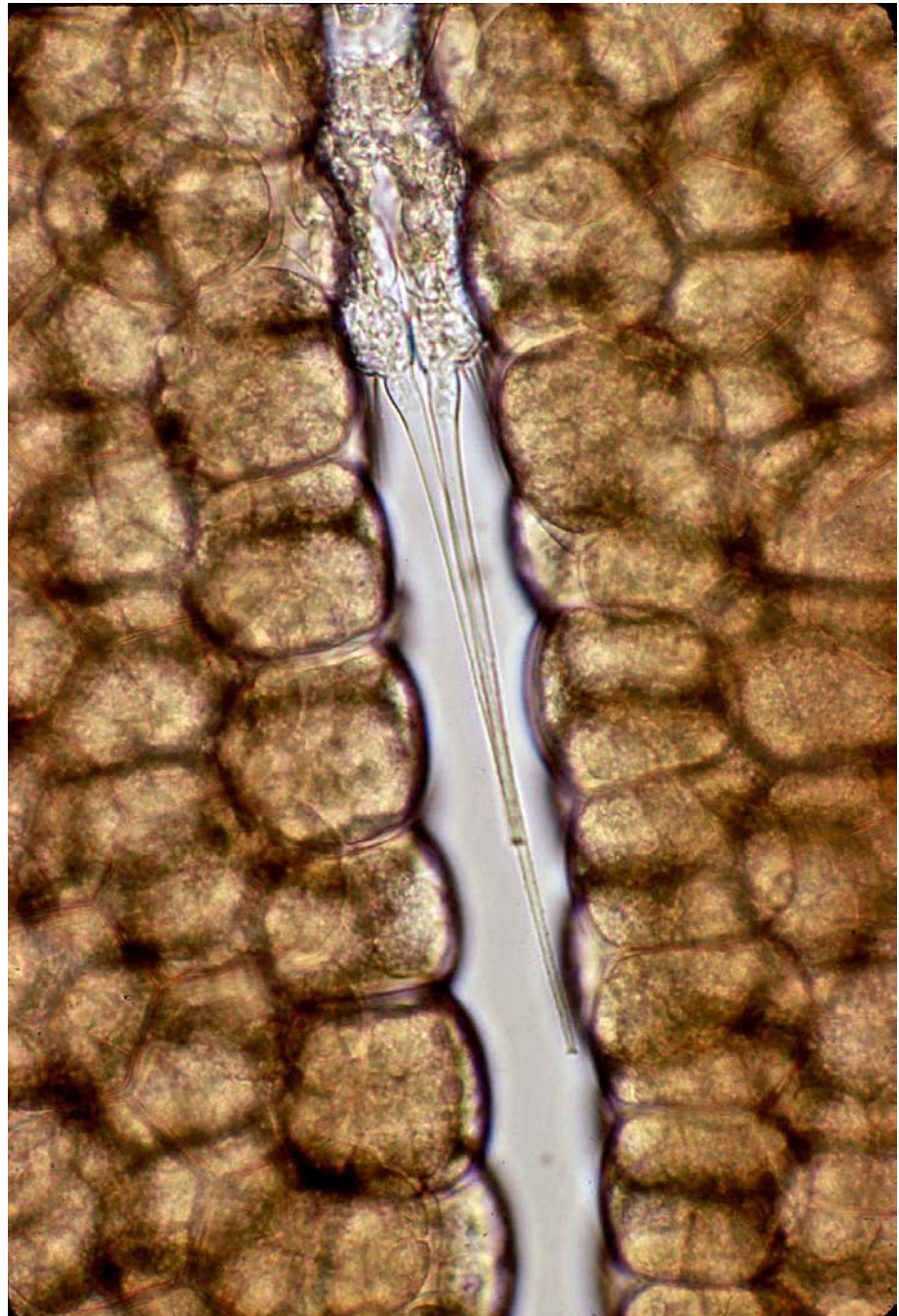
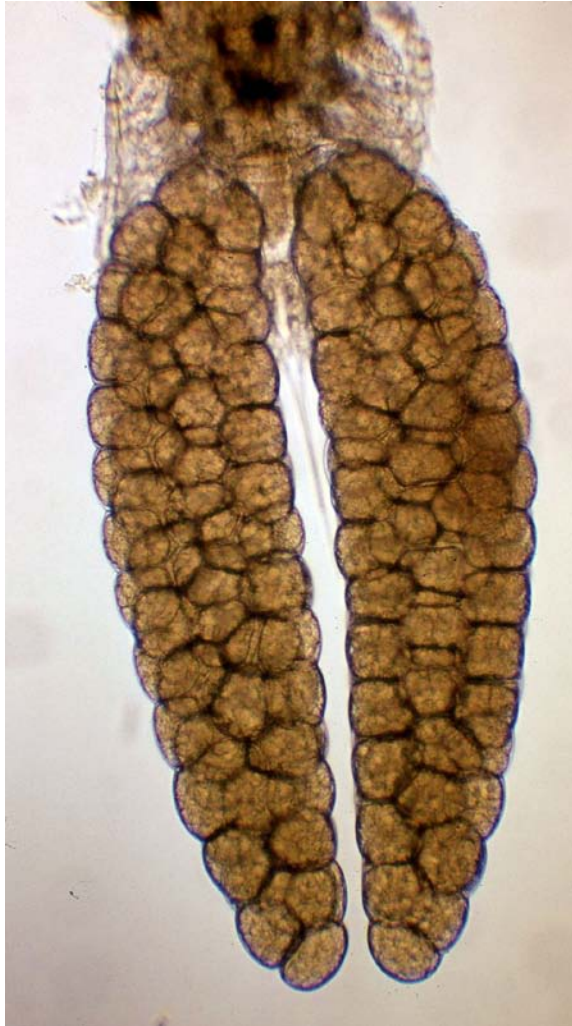
Ergasilus sp.: entire (left);
egg sacs (right). Water
mounts (a, artifact from
coverslip pressure).

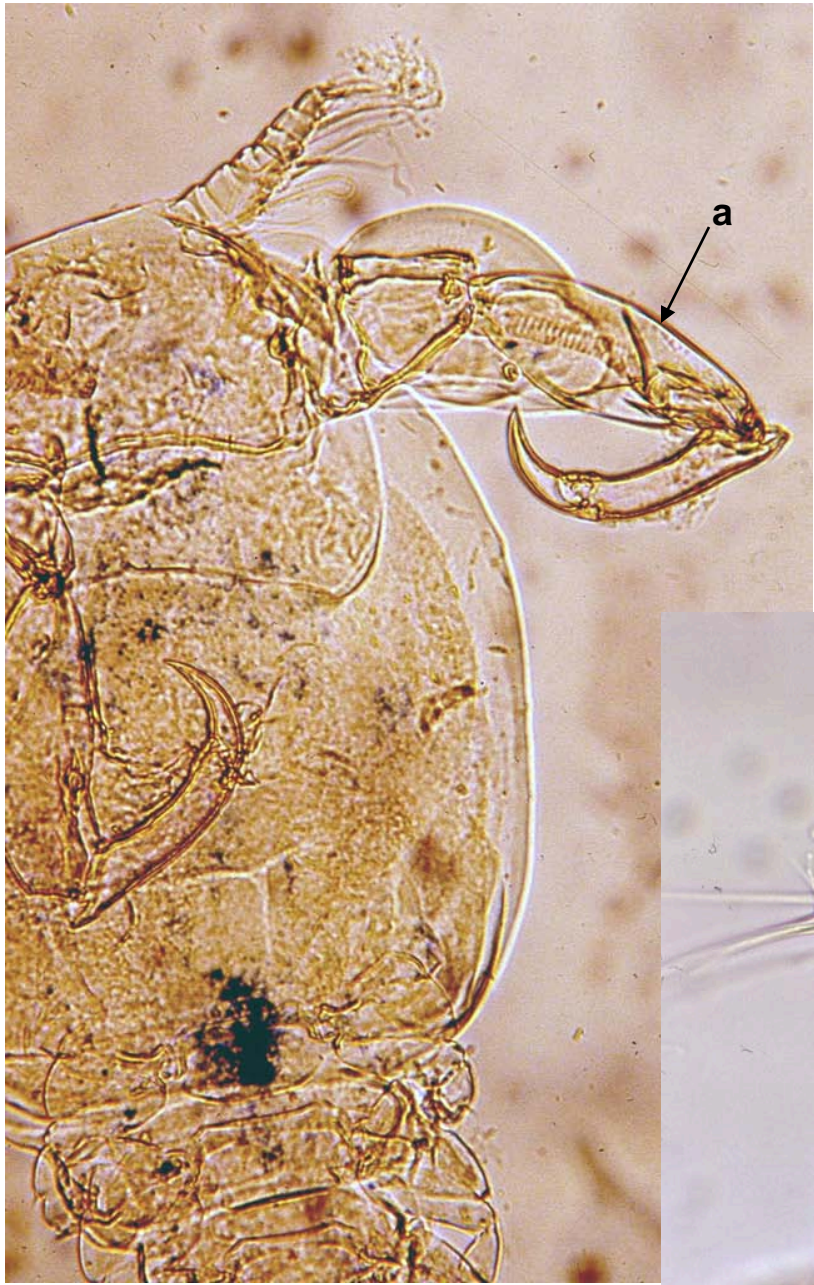


Ergasilus sp. abdomen .
Legend: a, abdomen;
c, caudal rami.



Ergasilus sp.; egg sacs,
water mount. Note
caudal rami between
egg sacs (right photo).





Ergasilus sp. anterior.
Legend: a, antenna (used for grasping gill filaments);
an, antennules.

